

Introducing Our Mobile WXGA Model

~ Wide-Screen Images in All Their Natural Glory ~

Brightness
2600lm

Contrast
2000:1

Long-life lamp
4000hr*
*Est. lamp rating in low mode.

NEW



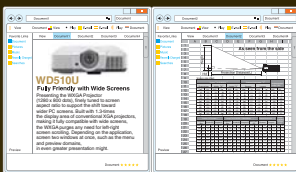
PORTABLE WXGA PROJECTOR

WD510U



Friendly with Wide Screens

Presenting the WXGA Projector (1280 x 800 pixels), finely tuned to support the aspect ratio shift toward wider PC screens. Built with 1.3-times the display area of conventional XGA projectors, making it fully compatible with wide screens — the WXGA purges any need for left-right screen scrolling. Depending on the application, you can even screen two windows at once, for even greater presentation impact might. DVD's may also be replayed in their native aspect ratio, free of image compression.



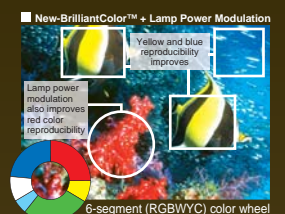
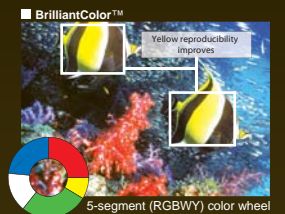
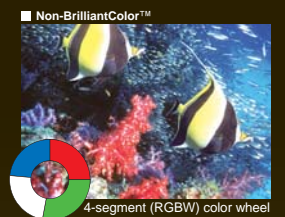
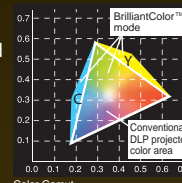
Display different windows side by side, eliminating the need for left-right scrolling.



Wide-screen broadcasts in all their natural glory.

BrilliantColor™ Technology and Mitsubishi Electric's Engineering Yields Superior Color Performance

BrilliantColor™ Technology is Texas Instruments latest innovation in producing amazing rich and vibrant colors. At Mitsubishi Electric, we developed a 6-segment color wheel that includes the colors of R,G,B,W,Y,C. Apart from the typical red, green, blue and white, we added yellow and cyan segments to display a wider color spectrum. In addition, we coded our color algorithms to emphasize brightness or color modes, designed to match the environment where the WD510U is used. Together with selective lamp powered modulation techniques, the WD510U with BrilliantColor™ technology acts intelligently to boost colors to improve the intensity and vibrancy of an entire display. For instance, when projecting an already-bright screen image, the lamp is programmed to provide brighter, more vivid colors. In contrast, if the image shows genuine color reproduction, the algorithm delivers just the right colors with the appropriate radiance for maximum visual impact.



Lamp Power Modulation

Light intensity increases for and cyan segments on the color wheel, emphasizing bright colors in even more vivid tones.

High Power

Normal Power

Low Power

Lamp Power (Basic concept)

Normal Mode (stressing color reproduction)

Light intensity increases for the RGB segment on the color wheel, ensuring ample brightness while screening brilliant colors.

High Power

Normal Power

Low Power

New-BrilliantColor™ + Lamp Power Modulation

Yellow and blue reproducibility improves

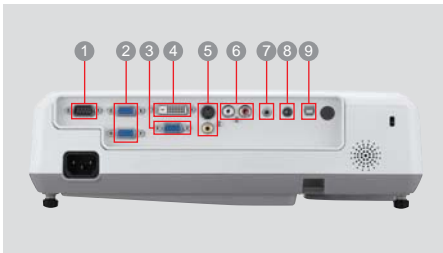
Lamp power modulation also improves red color reproducibility



Mobile WXGA projector

WD510U

Input and Output Terminals



- 1 Serial RS-232C
- 2 PC / Component Video input (mini D-sub 15pin)
- 3 PC / Component Video output
- 4 DVI-D (with HDCP)
- 5 S-Video / RCA
- 6 Audio input [RCA jack (L/R)]
- 7 Audio input (stereo mini jack)
- 8 Audio output
- 9 USB terminal for Page Up/Down

Outstanding Presentation Functions

Functional Performance at its best

- ▶ 2600 ANSI Lumens of outstanding brightness
- ▶ Super low noise operation at 29dB^{*1}
- ▶ Closed caption for the hearing impaired
- ▶ Center lens design for symmetrical installation
- ▶ Splash screen and wall screen support
- ▶ Separate audio and video inputs for computers and video sources



Splash screen

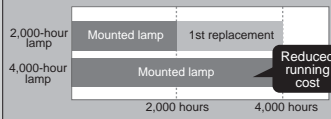
A Better Investment with a Lower Cost of Ownership

- ▶ Long estimated lamp life of 4,000hours^{*2}
- ▶ Top-access lamp cover for easy replacements
- ▶ Filter-free design for low cost of ownership
- ▶ Enhanced security features with reinforced anchor bars and password protection
- ▶ Instant shut down feature saves time

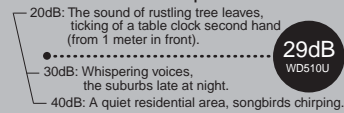


Top Access Lamp Cover

<Lamp Replacement Frequency^{*3}>



<Noise Level Examples>



(*1): When used at the low lamp mode. Maximum fan noise at standard mode use is 35dBa.

(*2): When used at the low lamp mode. Maximum lamp life at standard mode use is 2,000 hours.

(*3): Lamp life refers to the average time required for brightness to be reduced by half, and not the time specified in the warranty.

Use time may vary widely by the environment and conditions, and whether or not cleaning and other maintenance procedures are followed.

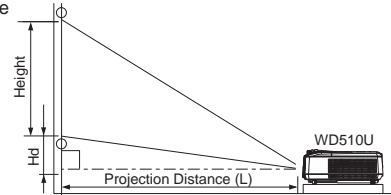
Specifications

Model	WD510U
Display technology	0.65"1-Chip DMD (12 deg. LVDS, DDP2230)
Resolution	1280 x 800 (total 1,024,000 pixels)
Brightness	2600 ANSI lumens
Contrast ratio	2000:1 (on/off)
Picture size	40"-300" (diagonal)
Projection lens	f=18.4 ~22.0 mm, F=2.5-2.8
Offset axis	12.0:1
Throw ratio	1.27 - 1.51
Source lamp	180W (Estimate lamp life rating 4000Hrs) with Low Mode 230W (Estimate lamp life rating 2000Hrs) with Standard Mode
Computer compatibility	640 x 480 ~ 1280 x 1024 True: 1280 x 800, Sync on green available
Video compatibility	NTSC / NTSC4.43 / PAL (including PAL-M, N) / SECAM / PAL-60, Component Video: 480i/p (525i/p), 576i/p (625i/p), 720p (750p), 1080i (1125i 60Hz), 1080i (1125i 50Hz)
Input terminals	RGB: mini D-sub15pin x 2, DVI: DVI-D (with HDCP) x 1, PC Audio: stereo mini jack (ø3.5mm) x 1, Video: RCA x 1 + S-video x 1, Video Audio: RCA jack (L/R) x 1
Output terminals	RGB: mini D-sub 15pin x 1, Audio: stereo mini jack (ø3.5mm) x 1
Communication terminals	RS-232C (D-sub 9pin), USB terminal for Page Up/Down
Audio speaker	2W mono
Fan noise	29dBa (at Low Mode)
Dimensions (WxHxD)	332x102x250mm / 13.1"x 4.0" x 9.8" (not included protrusion)
Weight	3.2kg / 7.0lbs
Power supply	AC100-240V, 50/60Hz
Optional lamp	VLT-XD510LP
Warranty	3-Years Parts/Labor, 3-Years Express Replacement Assistance, 1-Year or 500 hours lamp warranty (whichever comes first)
Accessories	Ceiling Mount (PROJ-UCM-PRO2 - Universal Ceiling Mount), Hard Shell Rolling Case (DKT1-ATAC), Soft Carrying Case (XL1-SSCC), Soft Rolling Case (DKT1-SRCC)

*All brand names and product names are trademarks, registered trademarks or trade names of their respective holders.

Screen size and Projection distance

As seen from the side



Screen size chart

Screen (16:10 WXGA)						Distance from screen (L)				Height projected image (Hd)	
Diagonal size		Width (W)		Height (H)		Shortest		Longest		Height projected image (Hd)	
inch	cm	inch	cm	inch	cm	inch	m	inch	m	inch	cm
40	102	34	86	21	54	42	1.1	51	1.3	1.9	5
60	152	51	129	32	81	64	1.6	78	2.0	2.9	7
80	203	68	172	42	108	86	2.2	105	2.7	3.9	10
100	254	85	215	53	135	108	2.7	131	3.3	4.8	12
150	381	127	323	79	202	163	4.1	198	5.0	7.2	18
200	508	170	431	106	269	218	5.5	264	6.7	9.6	24
250	635	212	538	132	337	273	6.9	331	8.4	12.0	31
300	762	254	646	159	404	328	8.3	-	-	14.5	37

Screen (4:3 screen)						Image (16:10 WXGA 1280x800dot)						Distance from screen(L)				Height projected image (Hs)			
Diagonal size		Width (W)		Height (H)		Diagonal size		Width (W)		Height (H)		Blank Space (D)		Shortest		Longest		Height projected image (Hs)	
inch	cm	inch	cm	inch	cm	inch	cm	inch	cm	inch	cm	inch	cm	inch	m	inch	m	inch	m
40	102	32	81	24	61	38	96	32	81	20	51	2.0	5	39	1.0	48	1.2	1.8	5
60	152	48	122	36	91	57	144	48	122	30	76	3.0	8	60	1.5	73	1.9	2.7	7
80	203	64	163	48	122	75	192	64	163	40	102	4.0	10	81	2.1	99	2.5	3.6	9
100	254	80	203	60	152	94	240	80	203	50	127	5.0	13	102	2.6	124	3.1	4.5	12
150	381	120	305	90	229	142	359	120	305	75	191	7.5	19	153	3.9	186	4.7	6.8	17
200	508	160	406	120	305	189	479	160	406	100	254	10.0	25	205	5.2	249	6.3	9.1	23
250	635	200	508	150	381	236	599	200	508	125	318	12.5	32	257	6.5	312	7.9	11.4	29
300	762	240	610	180	457	283	719	240	610	150	381	15.0	38	309	7.9	-	-	13.6	35

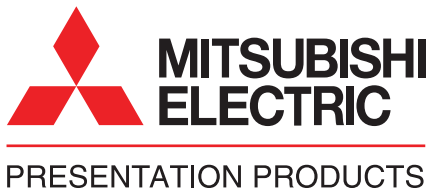
The above numbers are approximate, and may be slightly different from the actual measurements.

MITSUBISHI DIGITAL ELECTRONICS AMERICA, INC.

Presentation Products Division
Phone: 888.307.0349

Email: pppinfo@mdea.com

www.mitsubishi-presentations.com



MITSUBISHI ELECTRIC SALES CANADA, INC.

Display & Imaging Solutions Division
Phone: 905.475.7728

www.mitsubishieletric.ca