



**GSA
COMPLIANT**



High Brightness at an Affordable Cost

The XD470U-G is an affordable micro portable native XGA (1024x768) projector. This DLP® projector produces a bright 3000 ANSI lumens image and includes an impressive 2000:1 contrast ratio for extraordinary crisp details. It includes flexible connectivity options for both video and data connectivity and only weighs 6.2 lbs for convenient portability. Additionally, the XD470U-G includes an instant shut down feature, a filter-free design, and is backed by a 3-years parts and labor warranty and Mitsubishi's exclusive Express Replacement Assistance (ERA) program.

- DLP® Technology
- Native XGA Resolution (1024x768)
- 3000 ANSI Lumens and 2000:1 Contrast Ratio
- Up to 3000 hours lamp life*
- Instant shut down
- RS232C Communication
- Digital Keystone Correction (vertical)
- Anti-theft security hook

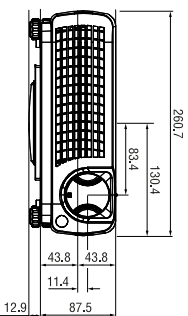
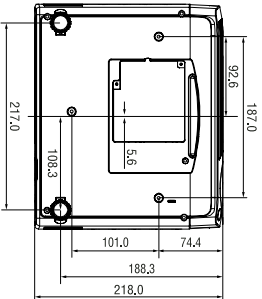
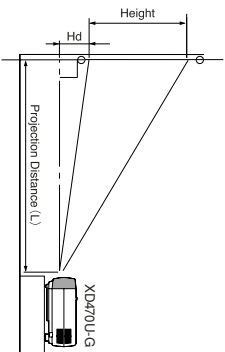
* low mode

XD470U-G XGA DLP® PROJECTOR



| Diagonal Size | SCREEN | | | | DISTANCE FROM SCREEN (L) | | | | HD | |
|---------------|--------|-----|------|-----|--------------------------|----------|------|-----|------|------|
| | inch | cm | inch | cm | Max.Zoom | Min.Zoom | inch | m | inch | cm |
| 40 | 102 | 32 | 81 | 24 | 50 | 1.3 | 60 | 1.5 | 3.5 | 8.8 |
| 60 | 152 | 48 | 122 | 36 | 76 | 1.9 | 91 | 2.3 | 5.2 | 13.3 |
| 80 | 203 | 64 | 163 | 48 | 101 | 2.6 | 121 | 3.1 | 7.0 | 17.7 |
| 100 | 254 | 80 | 203 | 60 | 126 | 3.2 | 151 | 3.8 | 8.7 | 22.1 |
| 150 | 381 | 120 | 305 | 90 | 189 | 4.8 | 227 | 5.8 | 13.1 | 33.2 |
| 200 | 508 | 160 | 406 | 120 | 305 | 6.4 | 302 | 7.7 | 17.4 | 44.2 |
| 250 | 635 | 200 | 508 | 150 | 381 | 8.0 | 378 | 9.6 | 21.8 | 55.3 |
| 300 | 762 | 240 | 610 | 180 | 457 | 9.6 | 378 | 9.6 | 26.1 | 66.3 |

The above numbers are approximate values



Unit measured in millimeters (mm)

| | |
|-------------------------------|--|
| DISPLAY TECHNOLOGY | 0.55" 1-Chip DMD, 12deg-DR, DPP2000 |
| RESOLUTION | 1024 x 768 (Total 786,432 pixels), 550 Video lines |
| BRIGHTNESS | 3000 ANSI Lumens |
| CONTRAST RATIO | 2000:1 |
| ZOOM/FOCUS | Manual Focus & Zoom Lens (Zoom Ratio 1.2:1) |
| PROJECTION LENS | F=2.4-2.6, (126°-150° inches@100") |
| THROW RATIO | 1.57-1.87 |
| OFF SET AXIS | 7.9°-1 |
| PICTURE SIZE | 40 -300 inches |
| COLOR WHEEL | 4 segment (R/G/B/W) |
| SOURCE LAMP | Normal Mode: 280W (Shut Off Time: 2000hrs), Low Mode:230W (Shut Off Time: 3000hrs) |
| PC COMPATIBILITY | Resolution: 640 x480 - 1024 x 768 + Compressed 1280 x 1024, Sync on Green available |
| VIDEO COMPATIBILITY | NTSC / NTSC 4.43 / PAL (including PAL-M, N) / SECAM / PAL-60 Component Video: 480i/p(525i/p), 576i/p(625i/p), 720p(750p), 1080i(1125i 60Hz), 1080i(1125i 50Hz) |
| INPUT TERMINALS | RGB: Mini D-sub 15pin x 2 Audio: Stereo mini jack (ø 3.5 mm) x 1 (variable) Video: RCA x 1 + S-VIDEO x 1 |
| OUTPUT TERMINAL | RGB: Mini D-sub 15-pin x 1 Audio: Stereo mini jack (ø 3.5 mm) x 1 Video: DC OUT, 5V 1.5A (Max) |
| COMMUNICATION TERMINAL | USB terminal for Page Up/Down RS232C: D-sub 9pin x 1 [H] 15 - 80 KHz [V] 50 - 85 Hz [Dot clock] max. 110 MHz |
| SCANNING RATE | 2 W Mono |
| AUDIO SPEAKER | Front Lifting leg x 1/ Rearward lifting leg x 2 |
| HEIGHT ADJUSTER | Full Projector Control, Power Point Page Up/Down via USB |
| HAND REMOTE UNIT | |
| POWER CONSUMPTION | 10.3" x 3.4" x 10.4" inches (261 x 87 x 265mm) (WXHXD excluding height adjustment) |
| DIMENSION | 380W / 3.5A |
| WEIGHT | 6.2lbs (2.8kg) |
| POWER REQUIREMENTS | AC 100-240 V, 50/60Hz |
| FAN NOISE | 39 dBA (Low Mode 36dBA) |
| SUPPLIED ACCESSORIES | <ul style="list-style-type: none"> • Soft carrying bag • Remote control (With 2 batteries) • Power cable • VGA/D-sub cable • Composite cable |
| WARRANTY | <ul style="list-style-type: none"> • User-Manual (CD-ROM) • Safety manual (with Safety Manual and Quick Start Guide) • Lens Cap |
| OPTIONAL ACCESSORIES | <ul style="list-style-type: none"> • 3-Years on Parts and Labor, 3-Years or 10,000-hours on the TI-DLP™ DMD Chip, 3-Years Express Replacement Assistance (ERA), 90-Days on Lamp |
| OUTSTANDING FEATURES | <ul style="list-style-type: none"> • Replacement Lamp (LIF-XD470LP), Ceiling Mount (PROJ-UCM), Hard Rolling Case (DKT1-ATAC), Soft Rolling Case (DKT1-SRCC) • Quick shutdown • RS232C Communication • Digital Keystone Correction (Vertical) • Anti-Theft Security Hook • Password Lock (menu access only) |



PRESENTATION PRODUCTS

MITSUBISHI DIGITAL ELECTRONICS AMERICA, INC.

Presentation Products Division

Toll Free: 888.307.0349

Email: prodinfo@mdesa.com

www.mitsubishi-presentation.com

Canada

Mitsubishi Electric Sales Canada Inc.

Information Technologies Group

Phone: 905.475.7725

www.mitsubishielectr.ca



©2007 Mitsubishi Digital Electronics America, Inc. Standard features, options and specifications subject to change without notice. All other trademarks are the property of their respective holders.

*The projector lamp contains mercury. Please dispose of properly.

PS6016-5/07-15M-LTXDX70U-G